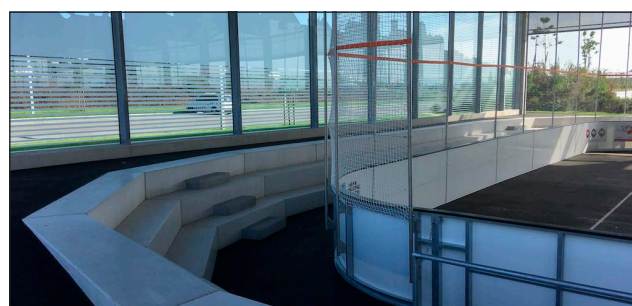
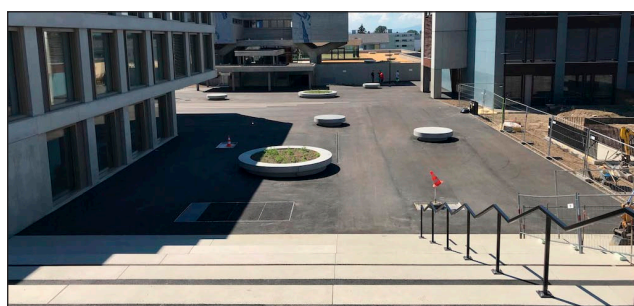
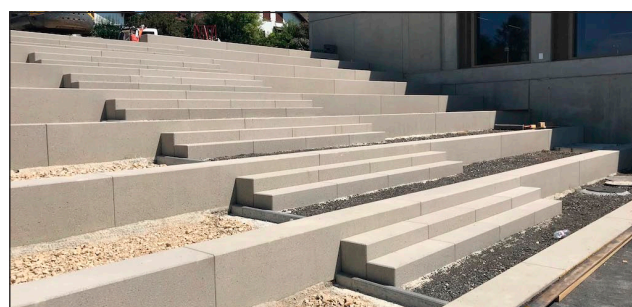
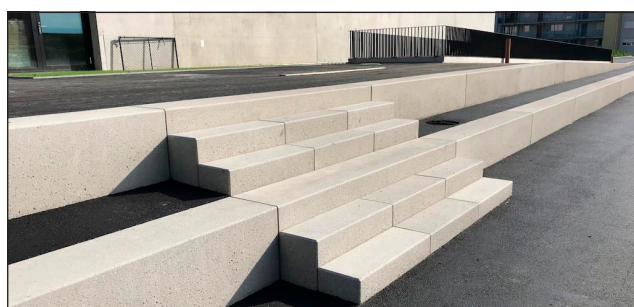
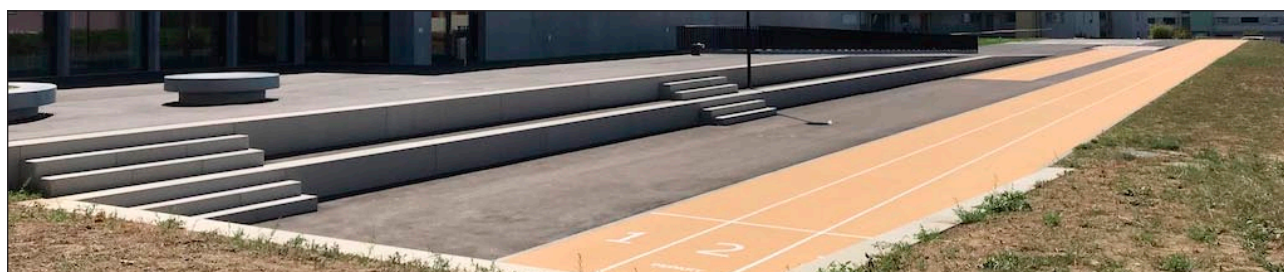


## **Objektbeispiel** Gestaltungselemente

Nr. 24-5/28.6.2019

<b>Objekt</b>	<b>Centre sportif Sous-Ville / Ecole Sous-Ville</b>
<b>Projekt</b>	Neubau Sportanlagen und Aussenraum der Schulanlage, Avenches
<b>Erstellung</b>	2017-2018
<b>Bauherr</b>	Commune Avenches
<b>Unternehmer</b>	RealSport Outdoor SA, Chemin de Combernesse 9, 1728 Rossens
<b>Produkte</b>	<ul style="list-style-type: none"><li>- Tribünen-Betonelemente</li><li>- Winkelbetonplatten</li><li>- Treppenanlage, Beton gestraht</li><li>- Einfassungen</li><li>- Beton-Rundbänke</li></ul>



Mitglied:



**Standort Basel:**

Silidur AG - Lachmatt 120 - 4133 Pratteln

Tel +41 (0)61 378 79 80 - Fax +41 (0)61 378 79 00 - info@silidur.ch - www.silidur.ch